

K12 FILE SPECIFICATIONS

K12 Statewide Assessment



Version 1.0.1

Generated 4/25/2024

Table of Contents

Table of Contents	p. 2
General Information	p. 3
General Information	p. 5
K12 Statewide Assessment	p. 6
County District Number	p. 6
School Number	p. 6
School Year Ending	p. 6
NDE Student ID	p. 6
Assessment Target Grade Level	p. 7
Assessment Date	p. 7
Assessment Name	p. 7
Subject Name	p. 7
Assessment Score	p. 7
Proficiency Level	p. 7
Reason Not Tested	p. 8

General Information

This document describes the data elements collected by the Nebraska Statewide Workforce & Educational Reporting System (NSWERS). Valid values and data validation rules that can be performed prior to data submission are listed where appropriate.

High-Level Data Collection Workflow

Scope

All students enrolled in courses (for credit AND/OR noncredit) at the institution for given academic year.

File Names

<i>File Specification</i>	<i>File Name</i>
K12 Statewide Assessment	#####_k12_assessment_YYYY_##.csv

Where	Represents
#####	IPEDS Institution ID
YYYY	Academic Year Ending
##	Optional sequence Number

Data Element Names

The following syntax is used throughout this document when referencing data elements.

Format: *NSWERS Field Name [File Specification: Field Name (Field Number)]
where:

- An asterisk (*) indicates the data element is a mandatory field. A non-blank or non-null value must be supplied in all mandatory fields for each record, or the data loading process will reject the record.
- NSWERS Field Name represents the name of the data element commonly used by the Nebraska Statewide Workforce & Educational Reporting System (NSWERS).
- File Specification indicates the formal name of the file specification.
- Field Name indicates the formal name of the field within the file specification.
- Field Number indicates the position of the field within the file specification.

Academic Year Ending

The academic year is understood as July 1 – June 30. Postsecondary data will be organized by academic year using Academic Year Ending. For example, the

Academic Year Ending field for 2020 – 2021 will simply read: “2021”.

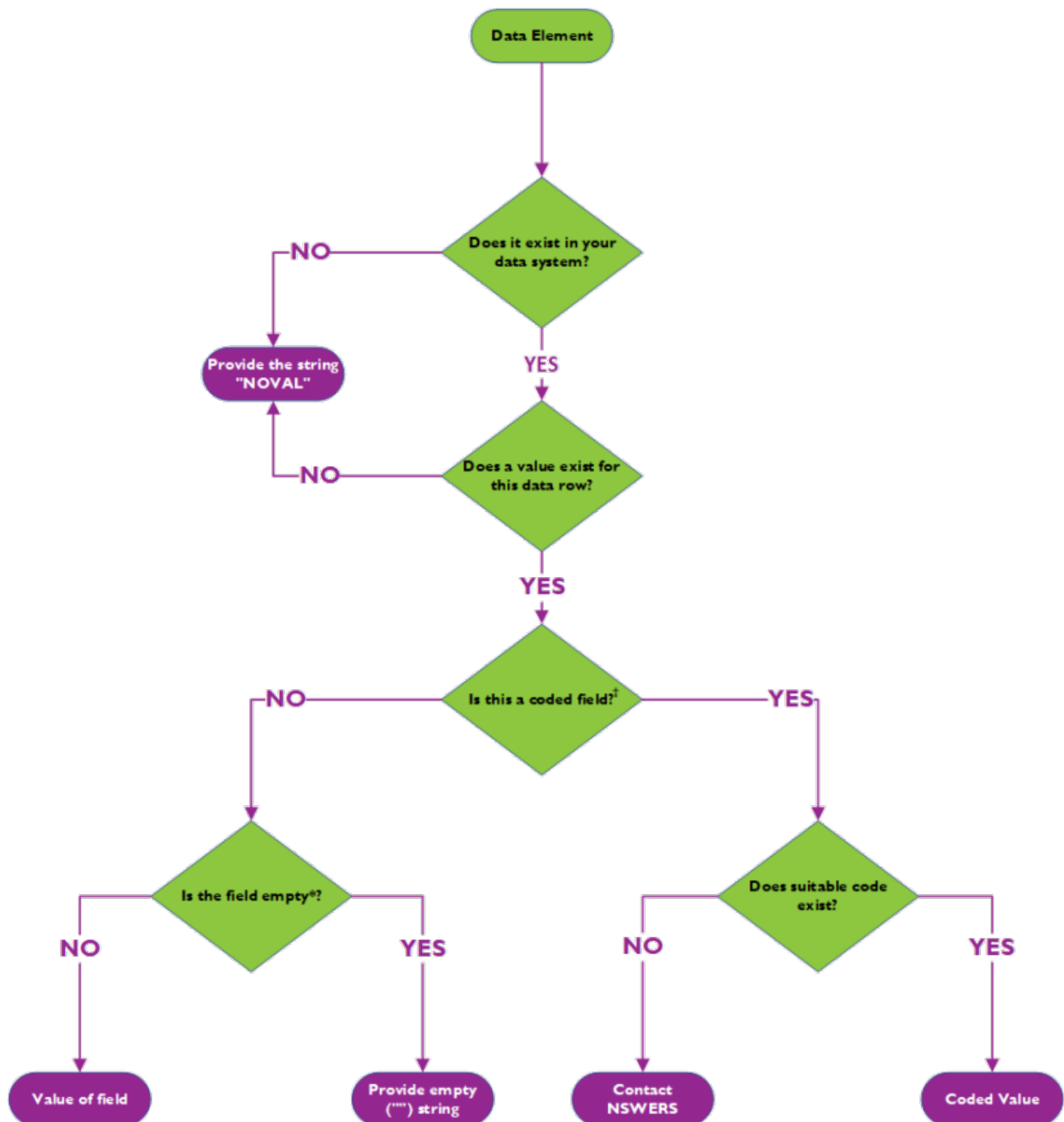
Notes of Importance

- Any values that contain a comma must be enclosed with quotes.
- Data fields should be ordered in the same sequence as identified in this document.

All files should be submitted in .csv format.

To maintain data privacy and security, and to preserve the informational chain of custody, NSWERS staff cannot edit original source data files. It is the responsibility of each data contributing partner to resolve errors discovered during data submission, validation, and certification processes. Corrected data files should be re-uploaded by partners into the NSWERS data system.

Decision Tree: Reporting for Nonmandatory Data Elements



†The field is represented by a code in the data specifications (e.g. gender, GED Status, etc)

*The field is blank or represented by a blank placeholder in your data system

K12 Statewide Assessment

The K12 Statewide Assessment file collects standardized educational assessment results for students. A K12 Student record must be submitted for each student appearing in the K12 Statewide Assessment file or the data loading process will reject the record.

Additional details can be found on our website at <https://nswers.orgs/insights/data-dictionary-and-elements/>

*County District Number [K12 Statewide Assessment:District Code (1)]

Provide the number assigned to the school district/system by NDE and should include a hyphen (“-”) between county number and district number. The number is based on the county in which the district/system headquarters is located and an assigned district number.

This is a mandatory field; a value must be supplied for each record or the data loading process will reject the record.

Format
##-####

*School Number [K12 Statewide Assessment:Location Code (2)]

Provide the primary school number for the student or staff.

This is a mandatory field; a value must be supplied for each record or the data loading process will reject the record.

Format
###

*School Year Ending [K12 Statewide Assessment:School Year Ending (3)]

Provide the literal school year ending in the format “YYYY”. The school year is understood as July 1 - June 30. For example, the value of the School Year Ending field for July 1, 2020 – June 30, 2021, would simply read: “2021”.

This is a mandatory field; a value must be supplied for each record or the data loading process will reject the record.

Format
YYYY

*NDE Student ID [K12 Statewide Assessment:Student ID (4)]

Provide the 10-digit Nebraska Department of Education Student Identifier.

This is a mandatory field; a value must be supplied for each record or the data loading process will reject the record.

Format

#####

***Assessment Target Grade Level [K12 Statewide Assessment:Assessed Grade Level (5)]**

Provide the grade level for which an assessment is designed to test.

This is a mandatory field; a value must be supplied for each record or the data loading process will reject the record.

Assessment Date [K12 Statewide Assessment:Assessment Date (6)]

Provide the date when the assessment was completed

Format

yyyy-MM-dd

Use the ISO date format (YYYY-MM-DD)

Assessment Name [K12 Statewide Assessment:Assessment Name (7)]

Name of the assessment (e.g. NESA, NSCAS, or ACT).

***Subject Name [K12 Statewide Assessment:Subject Name (8)]**

Provide the assessment subject, e.g. math, reading/ELA, or writing. For composite assessment scores, provide “composite”.

This is a mandatory field; a value must be supplied for each record or the data loading process will reject the record.

***Assessment Score [K12 Statewide Assessment:Assessment Score (9)]**

Provide a numeric value representing the score obtained by the student.

This is a mandatory field; a value must be supplied for each record or the data loading process will reject the record.

***Proficiency Level [K12 Statewide Assessment:Proficiency Level**

(10)]

Provide a code indicating proficiency in meeting state standards.

This is a mandatory field; a value must be supplied for each record or the data loading process will reject the record.

Reason Not Tested [K12 Statewide Assessment:Reason Not Tested
(11)]

Provide the reason a student was not tested, if applicable.

K12 Statewide Assessment

<i>Key</i>	<i>Position</i>	<i>Name</i>	<i>Type</i>	<i>Length</i>	<i>Format</i>
	1	County District Number	String	7	##-####
	2	School Number	String	3	###
	3	School Year Ending	Date	4	yyyy
	4	NDE Student ID	String	10	#####
	5	Assessment Target Grade Level	String	25	
	6	Assessment Date	Date	10	yyyy-MM-dd
	7	Assessment Name	String	25	
	8	Subject Name	String	25	
	9	Assessment Score	String		
	10	Proficiency Level	String		
	11	Reason Not Tested	String		